

The below process can be modified slightly to determine installation of the SOLera Dispensers (disregard info regarding chambers and priming of pump)

# Hotel Installation Instructions

Please follow these simple instructions when installing your AVIVA™ Dispensers.

**Positioning** – The ideal position for the Dispenser is on the long side-wall above where the soap dish is mounted, or the wall opposite the shower head. We recommend the Dispenser not be placed under the shower head. It should be at chest height.

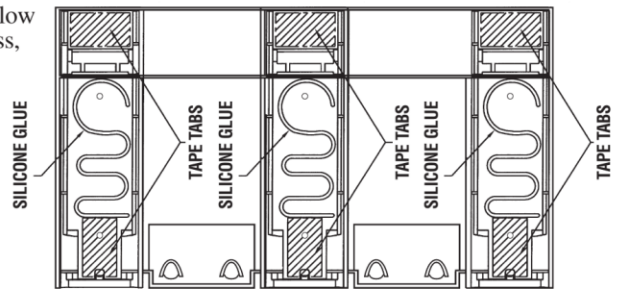
**Installation** – **NOTE: After installing the Dispenser, YOU MUST WAIT 24 HOURS BEFORE YOU FILL THE CHAMBERS, UNTIL THE SILICONE ADHESIVE CURES.**



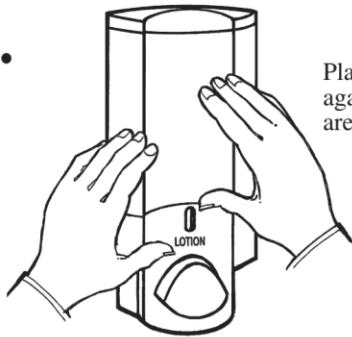
Installation Kit

**1.** Make certain that the wall area provides a clean, dry mounting surface. Clean with rubbing alcohol, if necessary, to remove soap film and allow to dry before beginning installation. If mounting on molded fiberglass, surface should be cleaned with nail polish remover to eliminate any wax residue from the fiberglass molding process.

**2.** You must use **ALL** the tape tabs **and** the **entire tube of silicone adhesive**. Run the silicone adhesive in a zig-zag up the adhesive rails.



**3.**

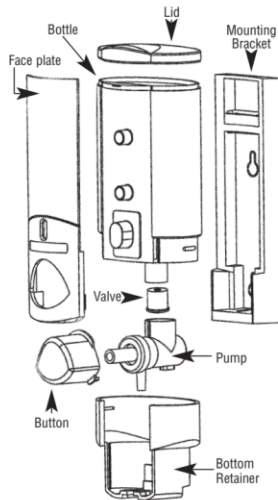


Place the unit firmly and hold tightly against the wall to ensure all tape tabs are in solid contact with the wall.

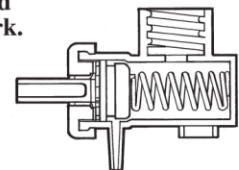
**NOTE: YOU MUST WAIT 24 HOURS BEFORE YOU FILL THE CHAMBERS**

### How The Dispenser pump works

There is a valve located in the bottom of the bottle (chamber). It **must** be there for the system to work. Do not remove it! When the pump button is pushed, this valve prevents the liquid in the pump, from going back up into the bottle. Without this valve, liquid will not flow properly.

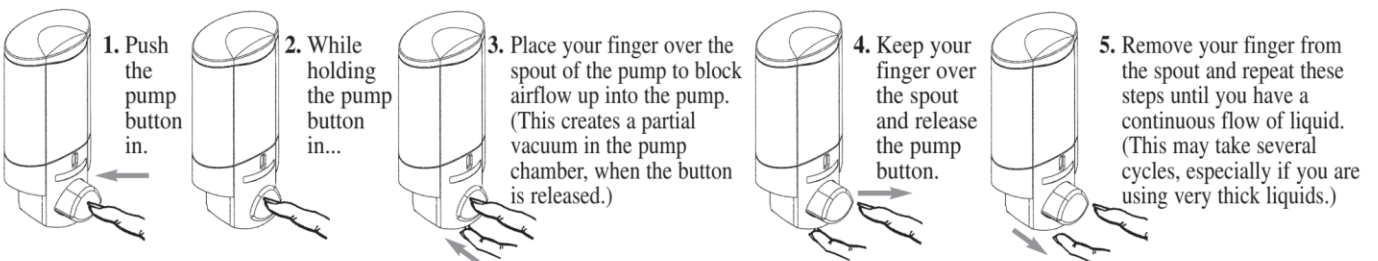


The Pump features a stainless steel spring and the finest space-age plastic components. Because it is a true “pump” it **must be primed** before it will work.



### 4. Priming the Pump

**NOTE: No liquid will come out of The Dispenser until the pump has been primed. Once it is primed, it will stay primed until the liquid runs out. If the chambers become empty, you must re-prime the pump.**



With normal use it is not necessary to clean out the chambers, simply top up the bottles.